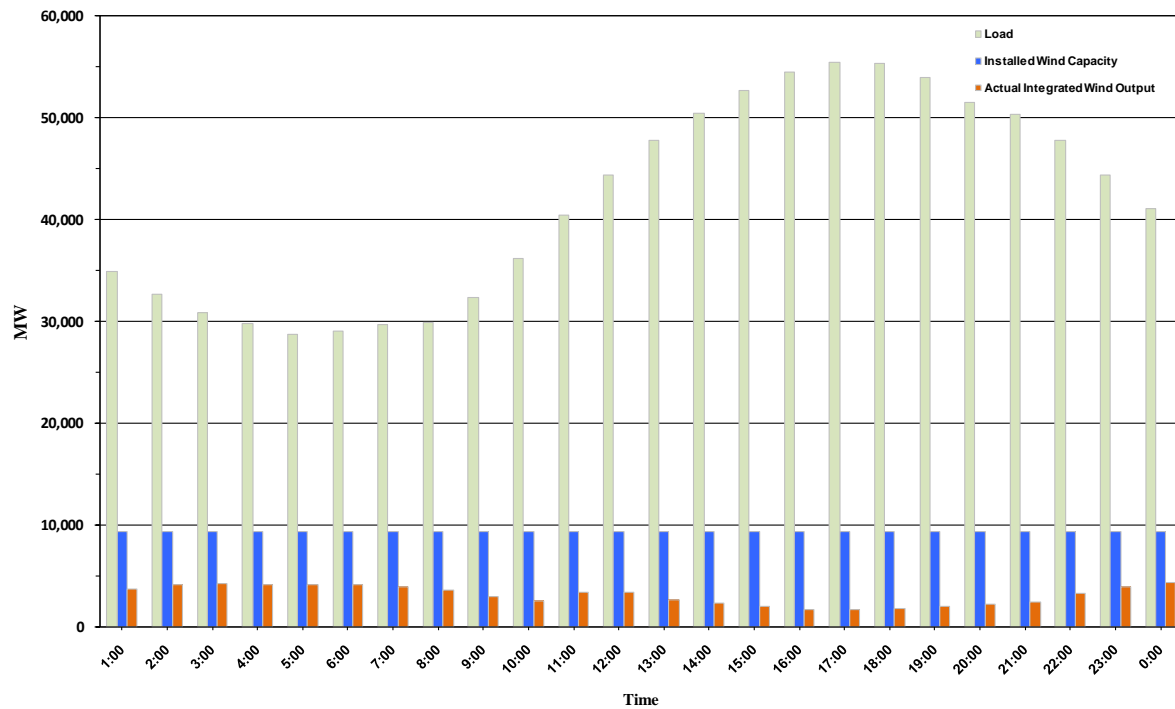




ERCOT Grid Operations Wind Penetration Report: 08/28/10

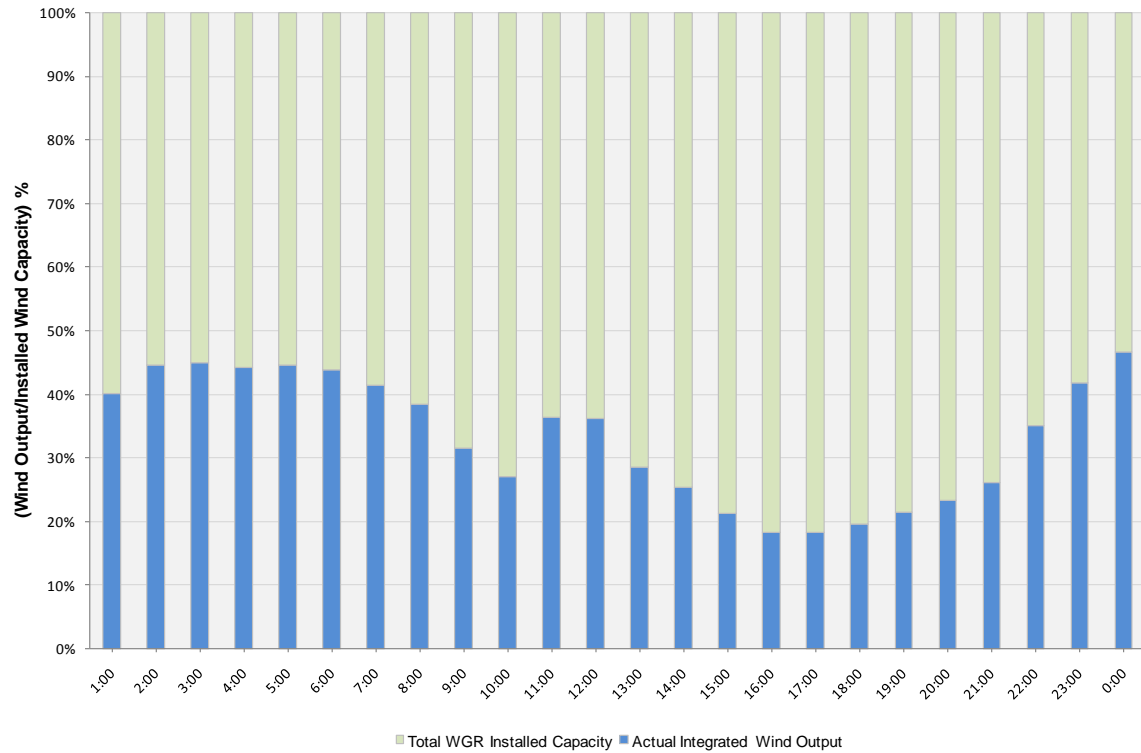
Peak Load	55,467 MW
Load Peak Hour	17
Wind Record 06/12/10	7016 MW
Max Wind value	4615 MW
Wind Peak Hour	23:50:56
Wind Penetration %	11.53

Hourly Average Actual Load vs. Actual Wind Output
08-28-2010

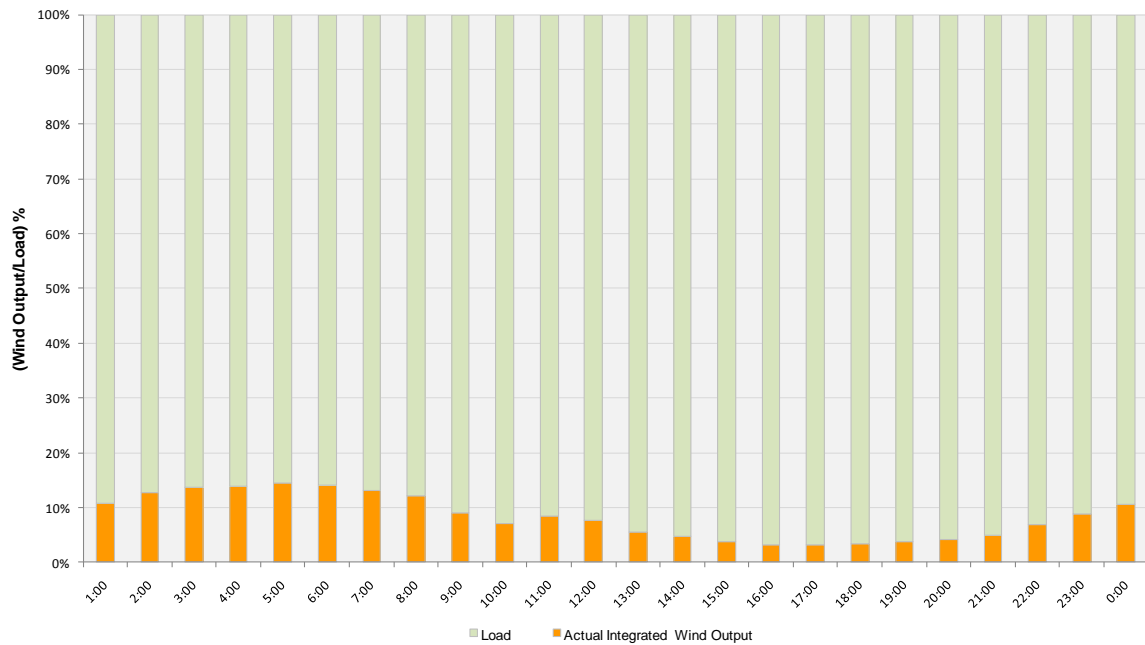




Actual Wind Output as a Percentage of the Total Installed Wind Capacity
08-28-2010



Actual Wind Output as a Percentage of the ERCOT Load
08-28-2010





ERCOT Load vs. Actual Wind Output 08/21/10 - 08/28/10

